

THE UK'S BEST SELLING DERMAL FILLER

LUMIFIL®

THE COMPLETE RANGE
WITH LIDOCAINE

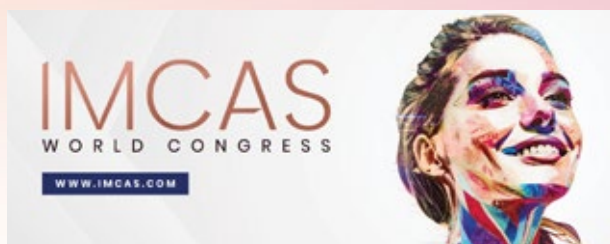


L-LITE

L-MAX

L-KISS

AS FEATURED IN



CE
2265

LUMIFIL

PRODUCT SPECIFIC TREATMENT AREAS

FOREHEAD
AND TEMPLES

WRINKLES

NOSE

CHEEK
AND UNDER EYES

NASOLABIAL
FOLDS

LIPS

CHIN AND JAWLINE

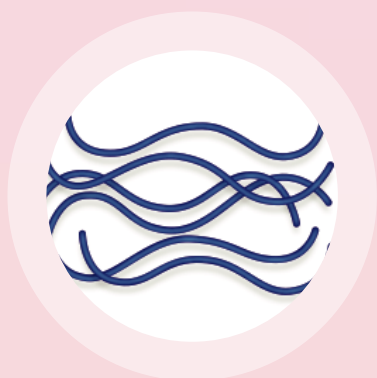
*IN ADDITION TO THE MODELS RECOMMENDED FOR
EACH INJECTION SITE, OTHER MODELS ARE ALSO AVAILABLE

ZERO BDDE

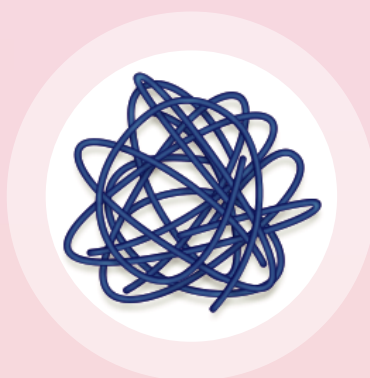
3D CROSS LINKED HYALURONIC ACID DERMAL FILLER

LUMIFIL Use non-animal based hyaluronic acid having a molecular weight of 2,500,00 Da as the principal ingredient.

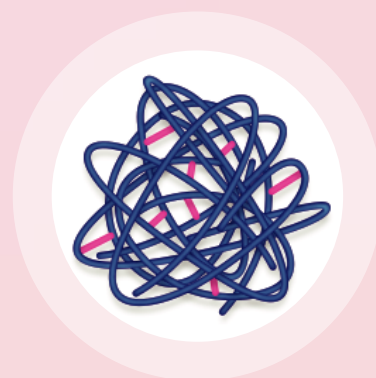
OPTIMUM VISCOSITY & ELASTICITY Are achieved simultaneously by applying LUMIFIL's unique technology which is capable of creating a 3D structure using only a small amount of cross-linking agent.



HYALURONIC
ACID BEFORE
CROSS LINKING



PRIMARY
NATURAL
CROSS LINKING

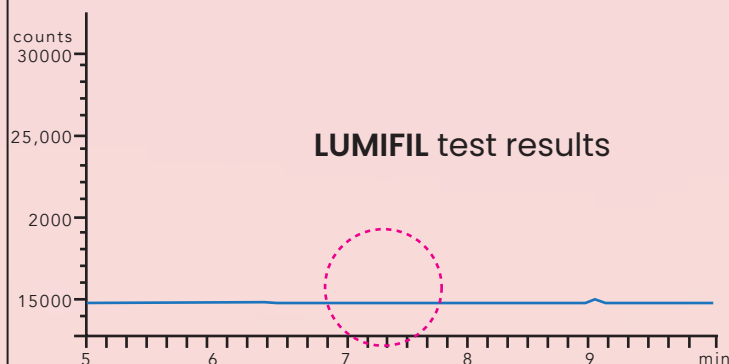
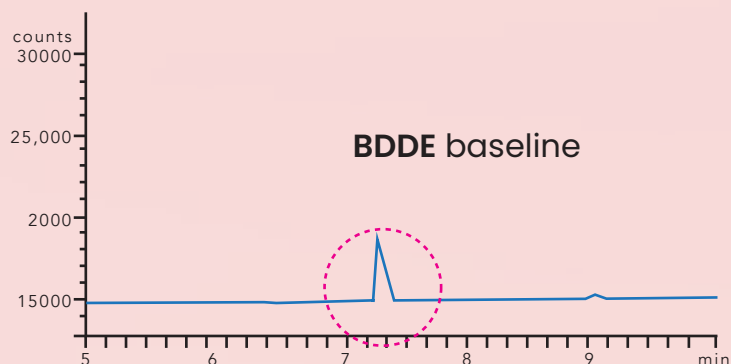


SECONDARY
OPTIMISED CROSS
LINKING WITH BDDE

BBDE RESIDUE & ENDOTOXIN

ARE STRICTLY PROCESSED UNDER CAREFUL CONTROL

LUMIFIL Is a product with low residue that has achieved safety standards after applying BDDE purification process.

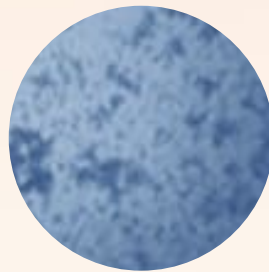
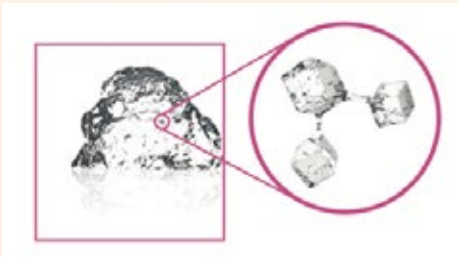


LUMIFIL HAS PATENTED TECHNOLOGY

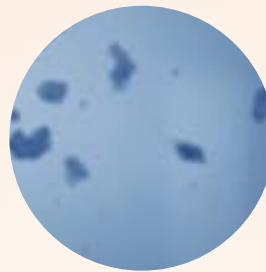
PARTICLE PLASTIC PROCESS (Patent No. 10-1223652)

LUMIFIL has its own uniform particle structure thanks to its unique HA cross-linking technique.

PP process is the technology that makes HA filler particles uniform. Through our optimised PP process, **LUMIFIL** has achieved a uniform HA particle size. A uniform particle structure enables constant injection and easy moulding thereby enhancing the effects of treatment.



HA LIDOCAINE
FILLER OF
COMPANY A



HA LIDOCAINE
FILLER OF
COMPANY B



LUMIFIL WITH
LIDOCAINE

*Ref: Particle size measurement of the BNC KOREA, INC. R&D Center
2. Patient: particle manufacturing apparatus and method of the v acid derivative
(Registration no. 10-1223652)

Our PP process allows for a long-lasting volumizing effect due to the increase in viscoelasticity.



OPTIMUM RHEOLOGICAL PROPERTIES

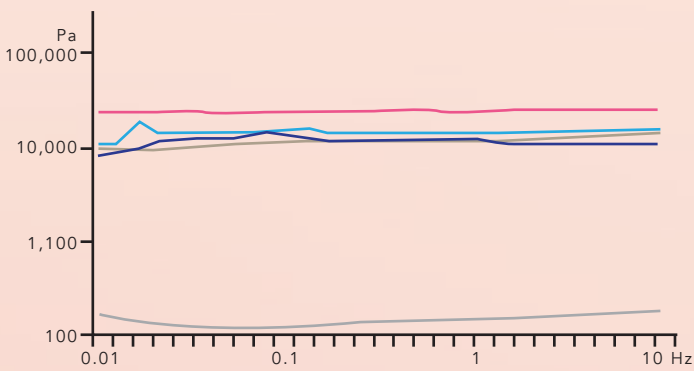
LUMIFIL IS A HIGHLY CONSISTENT MONOPHASIC TYPE

LUMIFIL has the stable constant gel structure, enhanced viscoelasticity by controlling phase angle (δ) values and storage modulus (G') value and further improving resilience externally.

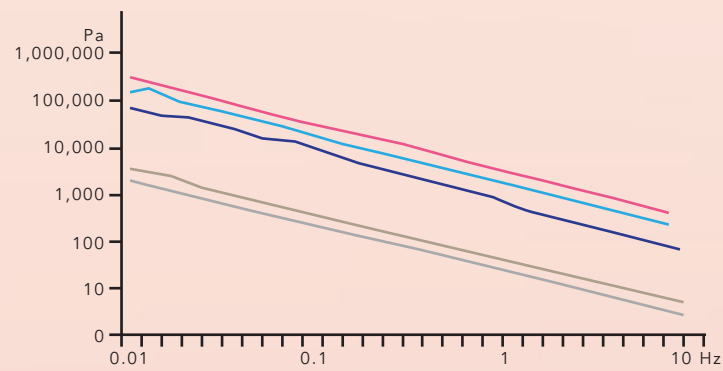


1) Storage modulus (G'): The ability to store deformation energy in an elastic manner. 2) Phase angle (δ): Phase angle determines G' (elasticity) value and G'' (viscosity) value. Phase angle of perfect elastic body is 0 degree indicating the maximum G' , whereas that of perfect fluid is 90 degree, indicating the maximum G'' .

STORAGE MODULUS= G'



COMPLEX VISCOSITY



*Ref: The viscoelastic data from the test KOPTRI (Korea institute of polymer. Co. Ltd)

KEY:

- LUMIFIL L-MAX
- PRODUCT R OF COMPANY A
- PRODUCT Y OF COMPANY B
- PRODUCT E OF COMPANY C
- PRODUCT N OF COMPANY D

THE LUMIFIL LINE UP

A CE MARKED RANGE TO
TREAT THE FULL FACE

LUMIFIL L-LITE 1.0ml/Syringe



L-LITE **BENEFITS**

Smoothing fine wrinkles
Improving skin texture.
Natural Results.

LUMIFIL L-KISS 1.0ml/Syringe



L-KISS **BENEFITS**

Enhancing lip volume and
border as well as nasolabial,
cheek and marionette lines.

LUMIFIL L-MAX 1.0ml/Syringe



L-MAX **BENEFITS**

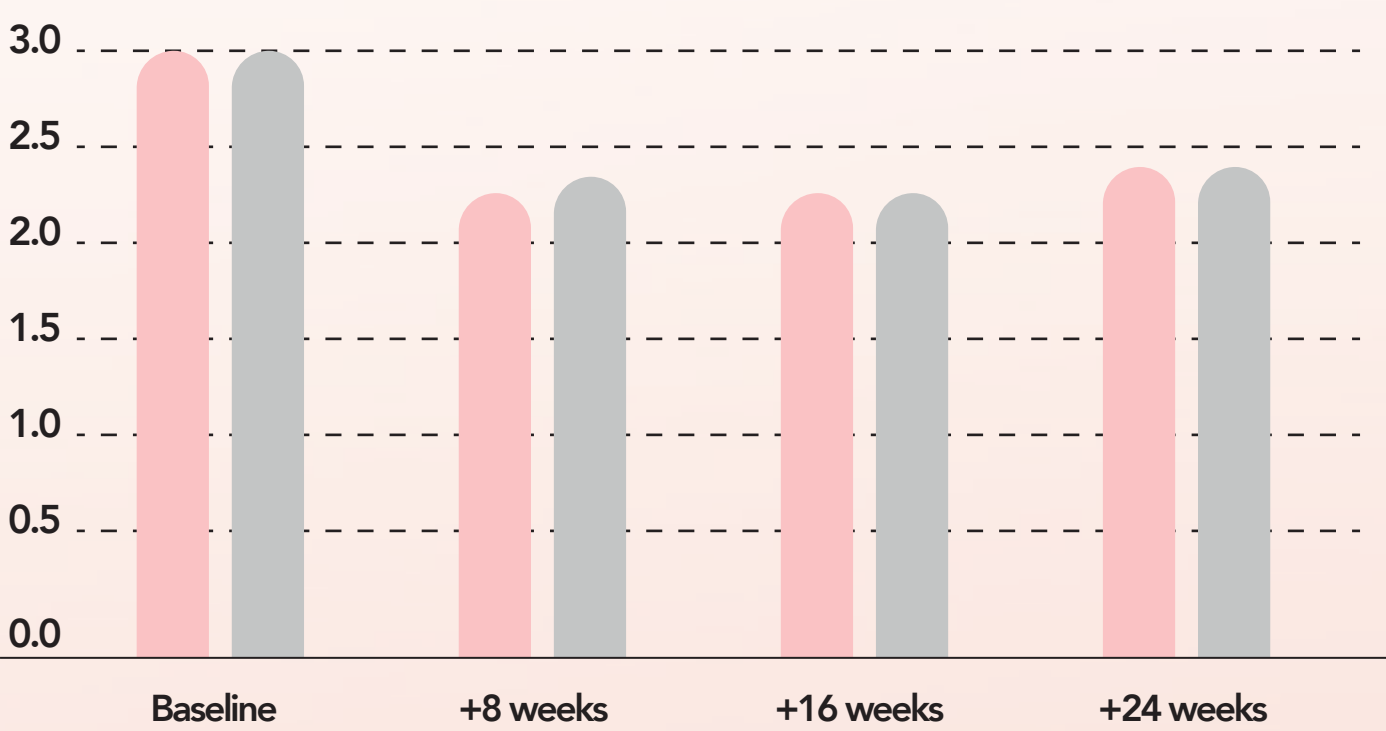
Suitable for treatments to the
temples, nose, cheeks, chin
and jawline.



LUMIFIL HAS BEEN CLINICALLY TESTED AGAINST RESTYLANE

COMPARISON ON A WRINKLE SEVERITY RATING SCALE.

LUMIFIL has undergone extensive comparative clinical trials conducted by major university hospitals under the approval of the medical device clinical trial from the Ministry of Food and Drug Safety. As such it is classed as an ultra pure CE marked HA dermal filler.



Comparison of Global Aesthetic Improvement (GAI) evaluated by investigator.

	+8 weeks	+16 weeks	+24 weeks
LUMIFIL (Experimental group)	1.6 ± 0.63	1.59 ± 0.74	1.37 ± 0.57
PRODUCT R (Control group)	1.59 ± 0.63	1.59 ± 0.74	1.37 ± 0.57

Comparison of Global Aesthetic Improvement (GAI) evaluated by subject.

	+8 weeks	+16 weeks	+24 weeks
LUMIFIL (Experimental group)	1.47 ± 0.84	1.41 ± 0.92	1.31 ± 0.92
PRODUCT R (Control group)	1.53 ± 0.78	1.42 ± 0.90	1.19 ± 0.98



SOLUTION FOR INDIVIDUALISED NEEDS

LUMIFIL CAN BE USED INDIVIDUALLY

LUMIFIL is designed to provide the ideal balanced level of cohesivity 1 elasticity 2 and plasticity 3 for each purpose through the HCCL TM technology.

LUMIFIL can be used individually or in combination of different models, allowing precise treatment according to individualised aesthetic needs.

LUMIFIL
L-LITE

Cohesivity ● ● ●
Elasticity ● ● ●
Plasticity ● ● ●

LUMIFIL
L-KISS

Cohesivity ● ● ●
Elasticity ● ● ●
Plasticity ● ● ●

LUMIFIL
L-MAX

Cohesivity ● ● ●
Elasticity ● ● ●
Plasticity ● ● ●

1) Cohesivity - The ability of a gel to stick together and thereby maintaining gel integrity.

2) Elasticity - The ability of a gel to return to its initial shape after being subjected to strain.

3) Plasticity - The ability of a gel to be shaped and modelled.

RECOMMENDED INJECTION AREAS



- Crows Feet 
 - Glabella Lines 
 - Perioral Wrinkles 
 - Forehead Lines 
 - Tear Troughs 
 - Earlobe Augmentation 
 - Lip Contouring 
 - Marionette line 
- LUMIFIL[®]**
L-LITE
- Nasolabial Lines 
 - Marionette Lines 
 - Lip contouring 
 - Glabella Lines 
 - Forehead Lines 
- LUMIFIL[®]**
L-KISS
- Cheek Augmentation 
 - Nose Augmentation 
 - Jawline Augmentation 
 - Forehead Augmentation 
- LUMIFIL[®]**
L-MAX

PRODUCT SUMMARY

LUMIFIL®
L-LITE


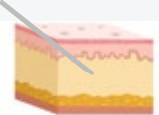
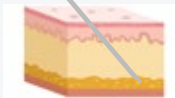


LUMIFIL®
L-KISS



LUMIFIL®
L-MAX

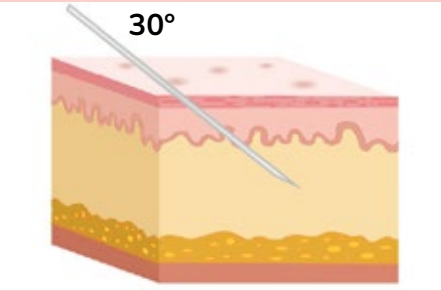


PROPERTY	Effective smoothing power	Effective balancing power	Effective volumizing power
COMPOSITION	Cross-linked HA / Lidocaine 0.3%	Cross-linked HA / Lidocaine 0.3%	Cross-linked HA / Lidocaine 0.3%
HA CONCENTRATION	20 mg/ml	20 mg/ml	20 mg/ml
CROSS-LINKING	●●●○	●●●○	●●●●
INDICATION	For smoothing lines and folds	For multi-purpose correction	For contouring shape and restoring lost volume
DEPTH OF INJECTION	Into the upper dermis 	Into the medium and deep dermis 	Into the deep dermis and periosteum 
PACKING	1 X 1.0ml syringe 2 X 30G needles	1 X 1.1ml syringe 2 X 27G needles	1 X 1.1ml syringe 2 X 25G needles

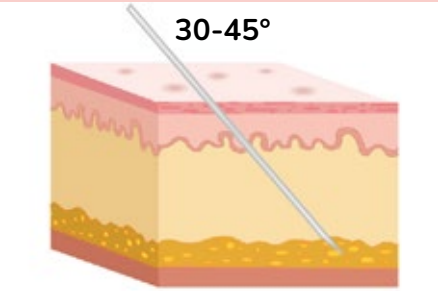
LUMIFIL®
L-KISS

LUMIFIL®
L-MAX

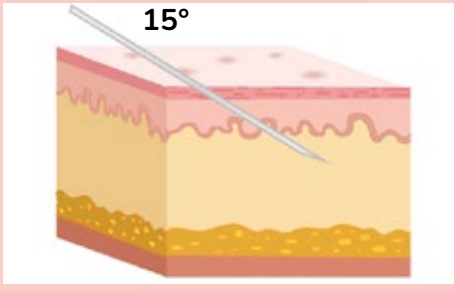
LUMIFIL®
L-LITE



Injecting KISS into the mid deep dermis at approximately 30 degrees.



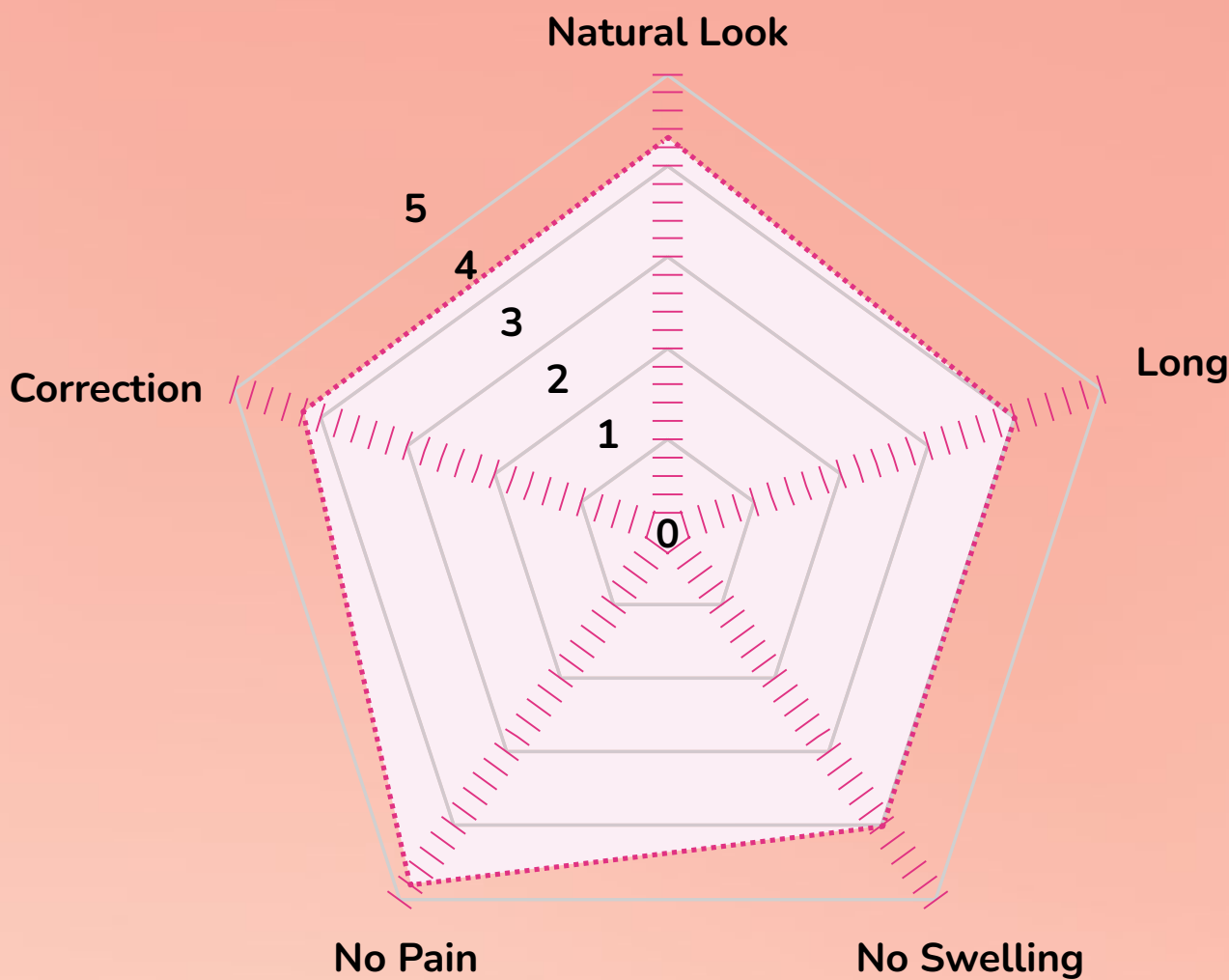
Injecting MAX into the deep dermis at approximately 30-45 degrees.



Injecting LITE* into the upper and mid dermis at approximately 15 degrees.

PATIENTS SATISFACTION

The addition of Lidocaine provides a pain relieving effect during the treatment and enhances patients comfort.



Ref. Survey results taken by the manufacturer.





LUMIFIL WITH LIDOCAINE

LUMIFIL® IS A UK BRAND 

LUMIFIL® is a UK brand owned and distributed by LUMIFIL® UK LIMITED, Unit 1, Gemini 8 Business Park, Charon Way, Warrington, WA5 7AE, UK. TEL: 01925 967131 WWW.LUMIFIL.CO.UK @Lumifil_UK, EMAIL sales@lumifil.co.uk
Company Registration Number: 12646628

MANUFACTURER - BNC KOREA, INC. #405, #502, #206, Daegu Techno Park Venture Factory B/D No.1, 62, Seongseogongdan-ro 11-gil, Dalseo-gu, Daegu, 42713, Korea. CONTACT INFORMATION - <http://www.bnckorea.co.kr> HQ: +82-70-7116-0059
Seoul: +82-70-7116-0710

WWW.LUMIFIL.CO.UK

LUMIFIL®